

Airline Industry History Data

Taken from Our Video on the History of the Airline Industry

Earliest companies that led to later giants

Antecedent Company	Airline	Year
Robertson	American	1926
Western Air Express	TWA	1926
National Air Transport	United	1926
Northwest Airways	Northwest	1926
Pan American Airways	Pan American	1927
Pitcairn Aviation	Eastern	1928
Varney Speed Lines Southwest Division	Continental	1934
Delta Air Lines	Delta	1934

The Formation of the Great Aviation Holding Companies

Late 1928: **North American Aviation** (Varney Air Lines, Maddux Air Lines, close relationship with Transcontinental Air Transport which merged with Western Air Express to form Transcontinental and Western Air = TWA, later included Eastern Air Transport; later bought by General Motors)

Feb. 1929: **United Aircraft & Transport** (Boeing Airplane & Transport, Pratt & Whitney, Sikorsky, Stearman, Chance Vought, Pacific Air Transport, Stout Air Services, National Air Transport = United Airlines)

Mar. 1929: **Aviation Corporation** or **AVCO** (Lycoming, Universal Aviation which itself was a combine, Southern Air Transport which combined St. Tammany-Gulf and Texas Air Transport = American Airlines)

Aug. 1929: **Curtiss-Wright** (Curtiss Flying Service, Wright engines, Curtiss aircraft)

Introduction of Transcontinental Air + Rail-at-night Services

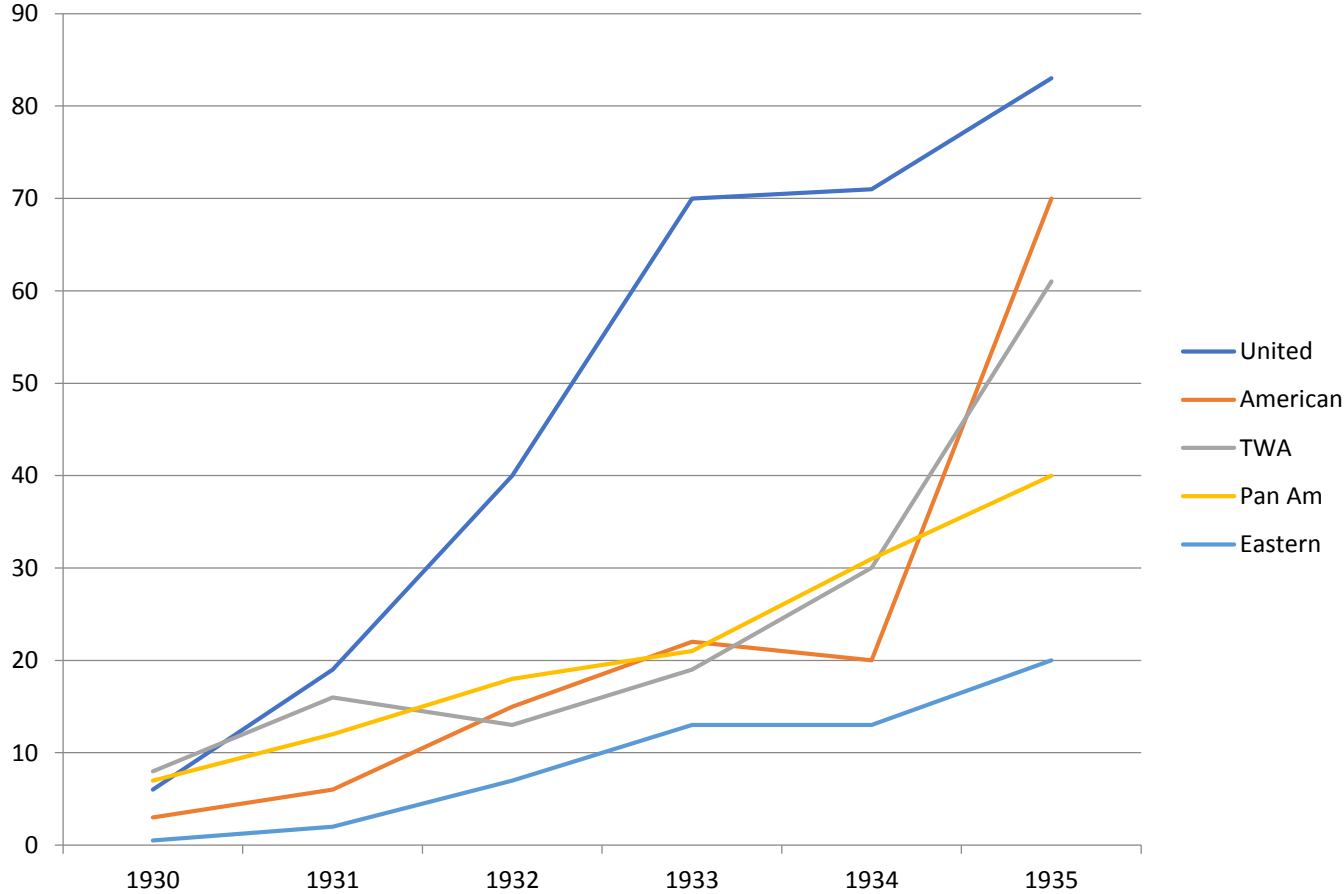
Date	Airline	Hours Required
7/1/27	Boeing	48
6/1/29	Western Air Express	70
6/14/29	Universal	67
7/7/29	Transcontinental Air Transport	48
8/29	Standard/SAFE	67
6/15/31	American Airways	53

Introduction of Transcontinental All-Air Services + Overnight Stop

Date	Airline	Hours Required
10/25/30	Transcontinental & Western Air	36
12/1/30	United Aircraft & Transport	48

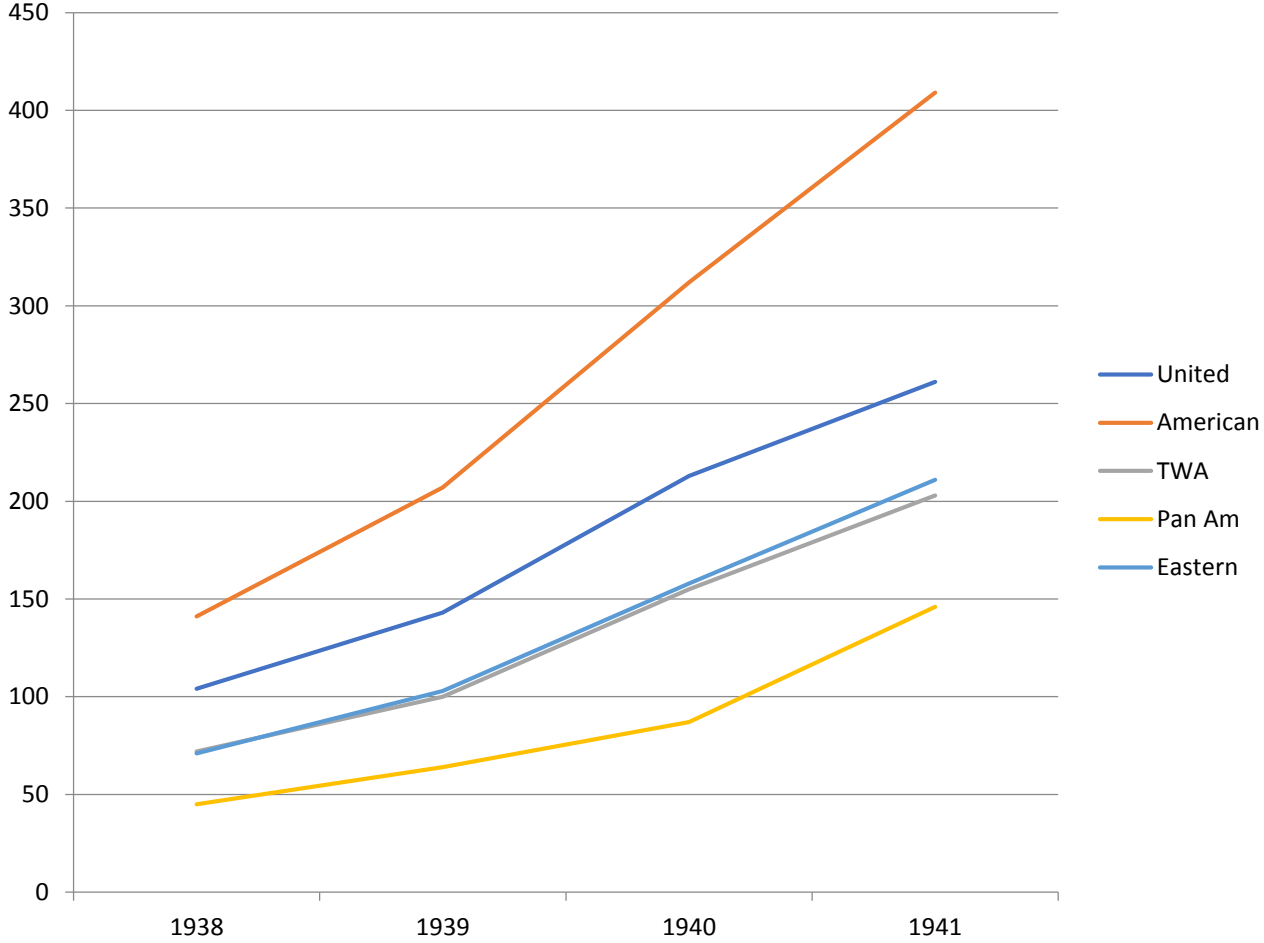
1930-1935

The Big Four Domestic Airlines plus Pan Am Revenue Passenger Miles (MM)



1938-1941

The Big Four Airlines plus Pan Am Revenue Passenger Miles (MM)



Domestic Trunk Airline Fleet, 1942

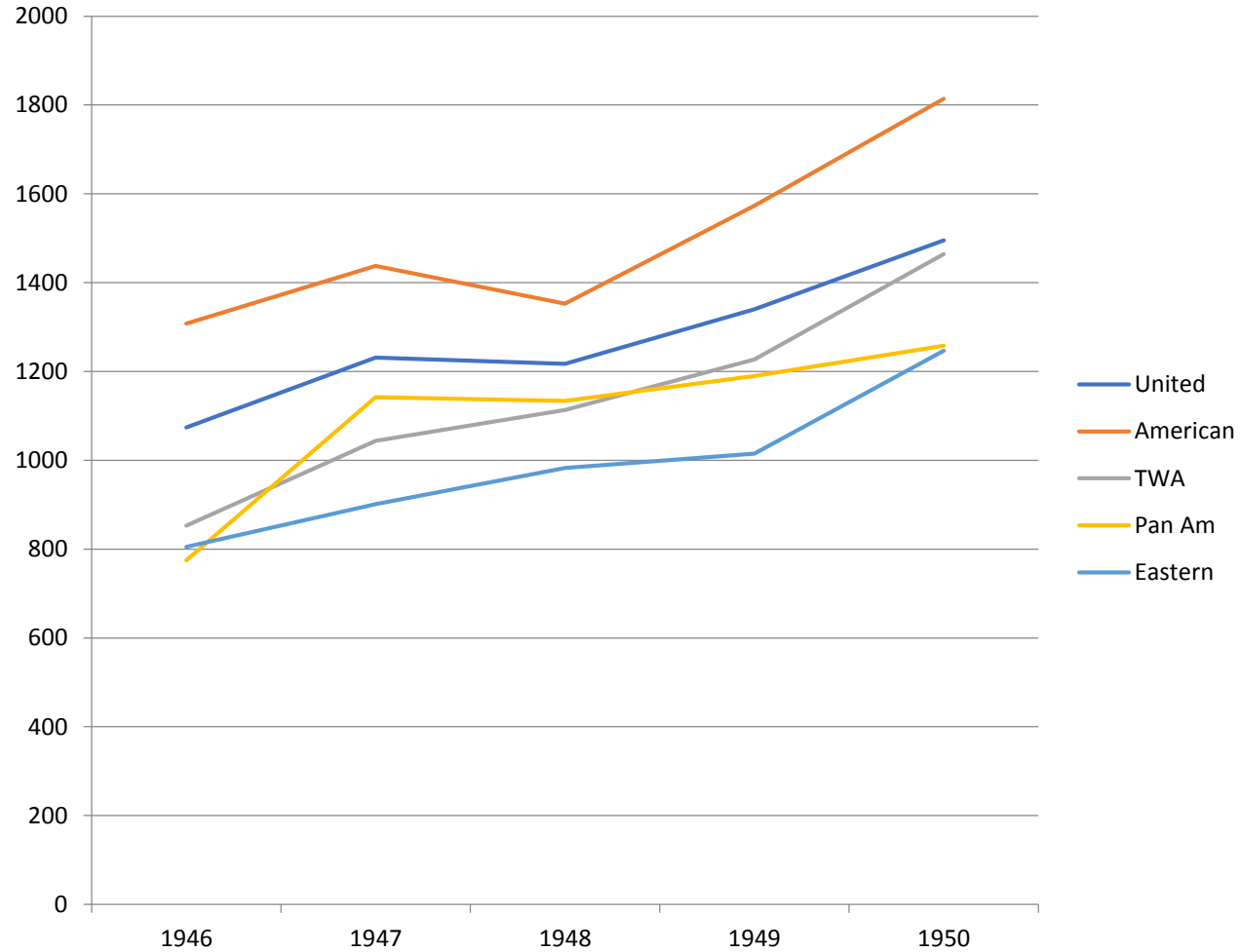
Douglas DC-2	8
Douglas DC-3	260
Total Douglas	268
Total Lockheed	29
Total Boeing	25
Total All Manufacturers	322

Leaders Who Built America's Big Four and Pan Am

Airline	Leader	Tenure as Chief	# Years
Pan Am	Juan Terry Trippe	1927-68	41
Delta	CE Woolman	1928-66	38
American	CR Smith	1934-68, 73-74	35
United	William "Pat" Patterson	1934-63	29
Eastern	Eddie Rickenbacker	1934-53	19
TWA	Jack Frye	1934-47	13
Continental	Robert F. Six	1938-80	42

1946-1950

The Big Four Airlines plus Pan Am Revenue Passenger Miles (MM)

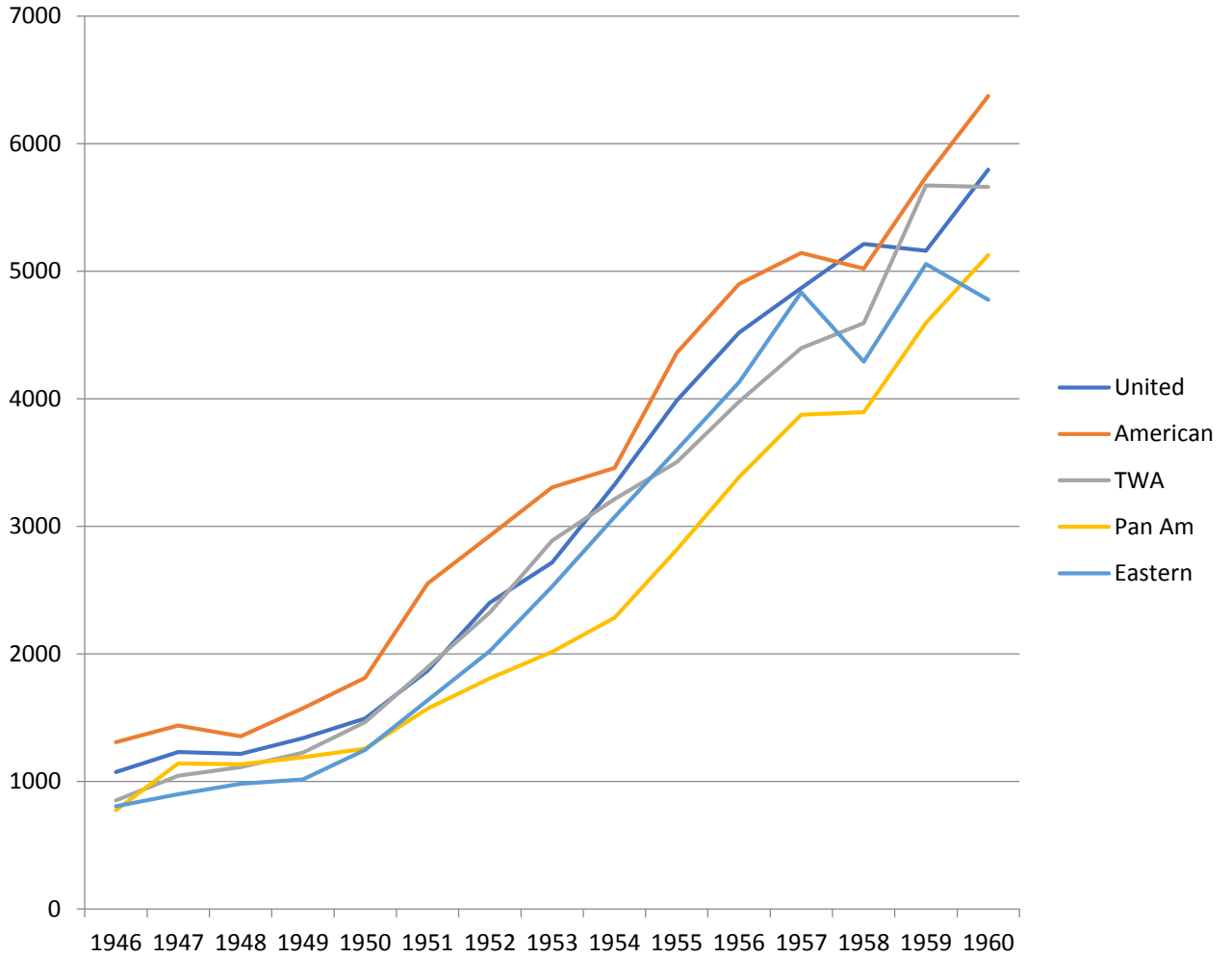


Selected Great Propeller Airliner Specifications

Manufacturer, Year of 1 st Service	Model	Number of Engines	Total Horsepower	Length (ft.)	Weight (000 lbs.)	Seats (Max)	Speed (mph)	Range (miles)
Douglas, 1936	DC-3	2	2,400	64	25	28	180	500
Lockheed, 1946	Constellation	4	8,800	95	98	54	310	3000
Douglas, 1946	DC-4	4	5,800	94	73	40	205	2500
Douglas, 1947	DC-6	4	9,600	101	97	56	310	2750
Boeing, 1948	377 Stratocruiser	4	14,000	110	146	60	300	3000
Lockheed, 1951	Super Constellation	4	10,800	114	120	88	279	2450
Douglas, 1953	DC-7	4	13,000	109	122	99	360	2800
Douglas, 1956	DC-7C	4	13,000	112	143	110	355	4250
Lockheed, 1957	Starliner Constellation	4	13,600	116	156	99	350	5280

1946-1960

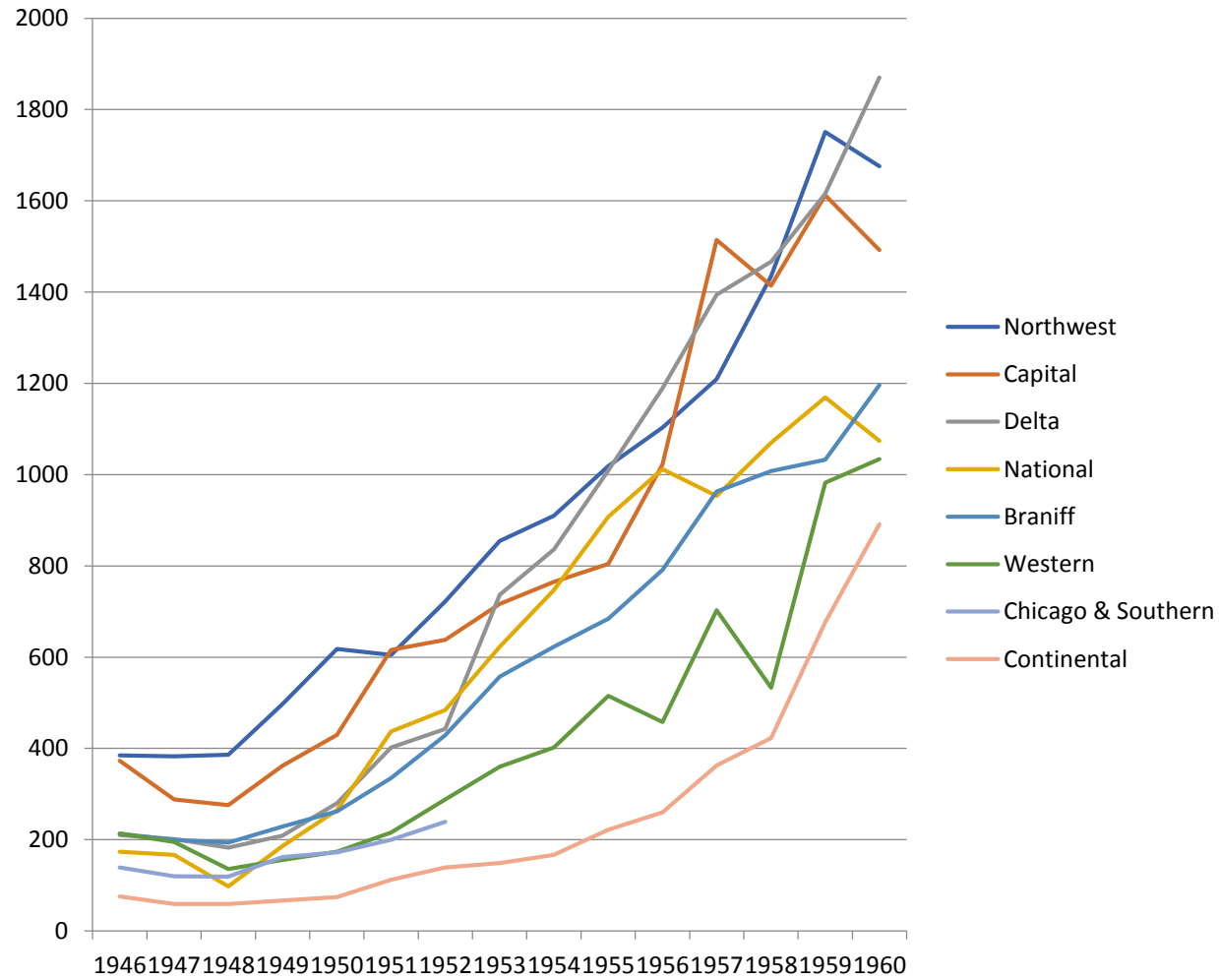
The Big Four Airlines plus Pan Am Revenue Passenger Miles (MM)



1946-1960

The Other Major Trunk Airlines

Revenue Passenger Miles (MM)



Largest US Transportation Companies, 1955

Rank	Company	Annual Sales (\$MM)
1	Pennsylvania Railroad	951
2	New York Central	852
3	Southern Pacific	667
4	Atchison, Topeka & Santa Fe	578
5	Union Pacific	509
6	Baltimore & Ohio	432
7	Chesapeake & Ohio	380
8	Missouri Pacific	300
9	Illinois Central	295
10	Southern Railway	277
11	Great Northern	267
12	American Airlines	261
13	Chicago, Burlington & Quincy	252
14	Chicago, Milwaukee, St. Paul & Pacific	245
15	Pan American World Airways	238
16	United Airlines	236
17	Greyhound	226
18	Trans World Airlines	217
19	Norfolk & Western	209
20	Chicago & North Western	199

Domestic Trunk Airline Fleet, 1958

Douglas DC-3	78
Douglas DC-4	32
Douglas DC-6	270
Douglas DC-7	214
Douglas Total	594
Lockheed Constellation	218
Lockheed Other Aircraft	10
Lockheed Total	228
Convair	229
Martin	104
Vickers	82
Boeing	9
Others	8
Total All Manufacturers	1254

World's Largest Airlines, 1961

Rank	Airline
1	Aeroflot
2	United
3	Pan American
4	American
5	TWA
6	Eastern
7	Air France
8	British Overseas Airways Corp (BOAC)
9	Trans Canada
10	Delta
11	KLM
12	British European Airways
13	Northwest
14	SAS
15	Braniff
16	Alitalia
17	National
18	Lufthansa
19	Western
20	Varig

First Introduction of Jet Services by Major Airlines

Date	Airline	Aircraft	City Pair
10/28/58	Pan American	Boeing 707	New York - London
12/10/58	National	Boeing 707	New York – Miami
1/25/59	American	Boeing 707	New York - Los Angeles
3/20/59	TWA	Boeing 707	New York - San Francisco
6/8/59	Continental	Boeing 707	Los Angeles – Chicago
9/18/59	United	Douglas DC-8	New York - San Francisco
9/18/59	Delta	Douglas DC-8	New York – Atlanta
12/20/59	Braniff	Boeing 707	New York – Dallas
1/24/60	Eastern	Douglas DC-8	New York - Miami
6/1/60	Western	Boeing 707	Los Angeles - Seattle
9/16/60	Northwest	Douglas DC-8	New York - Seattle

Selected Great Jet Airliner Specifications

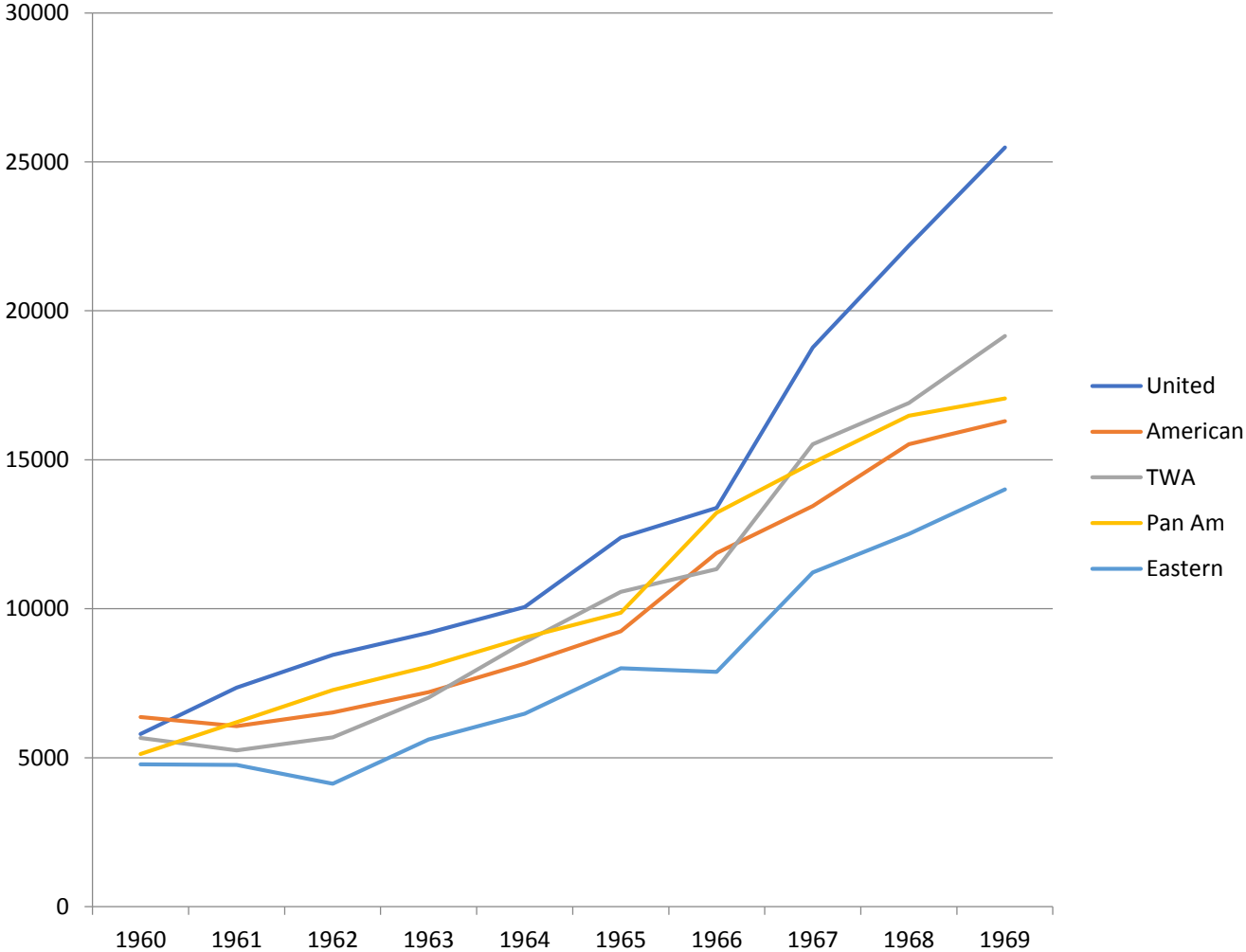
Manufacturer, Year of 1 st Service	Model	Number of Engines	Total Thrust (lbs.)	Length (ft.)	Weight (000 lbs.)	Seats (Max)	Speed (mph)	Range (miles)
Boeing, 1958	707-120	4	54,000	145	248	181	600	3000
Douglas, 1959	DC-8-10	4	54,000	151	273	179	542	4300
Convair, 1960	880	4	44,800	129	185	124	605	2845
Boeing, 1964	727-100	3	42,000	133	170	131	600	2500
Douglas, 1965	DC-9-10	2	28,000	104	92	80	557	1700
Douglas, 1967	DC-8-61	4	72,000	187	328	250	580	5300
Boeing, 1968	737-200	2	28,000	100	111	119	575	1760
Boeing, 1970	747-100	4	188,000	231	713	490	625	5800
Douglas, 1971	DC-10-10	3	120,000	181	430	345	600	2760
Lockheed, 1972	L-1011	3	121,800	178	409	345	600	3280

Domestic Trunk Airline Fleet, 1969

Douglas DC-8	222
Douglas DC-9	187
Douglas Total	409
Boeing 707	295
Boeing 720	118
Boeing 727	562
Boeing 737	103
Boeing Total	1078
Lockheed	47
Convair	41
Others	66
Total All Manufacturers	1641

1960-1969

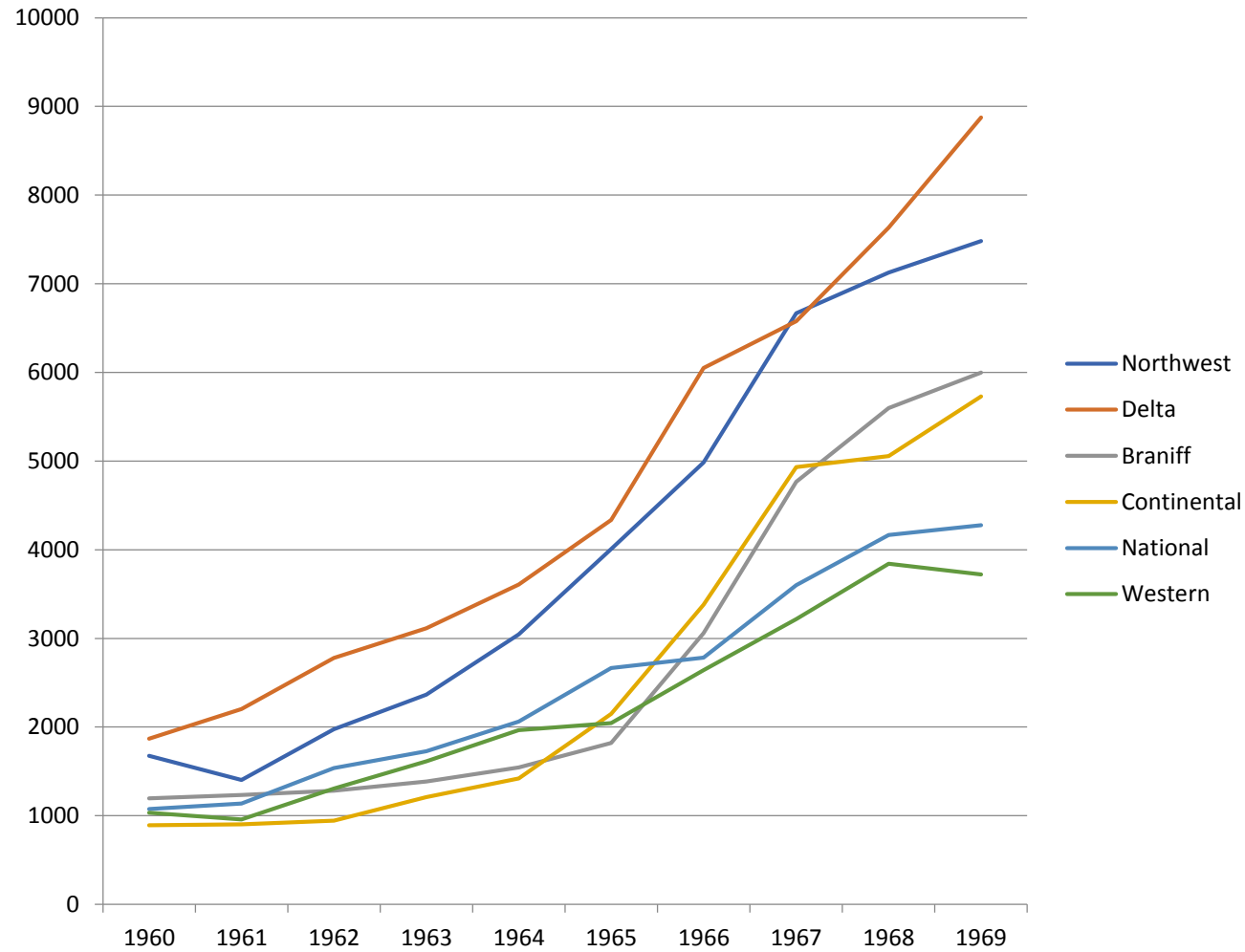
The Big Four Airlines plus Pan Am Revenue Passenger Miles (MM)



1960-1969

The Other Major Trunk Airlines

Revenue Passenger Miles (MM)



World's Largest Airlines, 2008

Airline	2008 Passenger Miles (MM)
Delta + Northwest	326,102
Air France + KLM	243,105
American	242,987
United	204,706
Continental	149,845
Lufthansa	126,267
Southwest	124,734
British Airways	114,608

Note: Delta and Northwest were not yet merged in 2008

World's Largest Airlines, 2008

Airline	2008 Passengers Carried (MM)
Delta + Northwest	165.7
Southwest	101.9
American	92.8
United	86.4
Air France + KLM	73.8
Lufthansa	70.5
Continental	66.7
China Southern	58.0
US Airways	54.8

Note: Delta and Northwest were not yet merged in 2008

Largest US Transportation Companies, 2008

Rank	Company	Annual Sales (\$MM)
1	United Parcel Service	51,486
2	FedEx	37,953
3	AMR	23,766
4	Delta Air Lines	22,697
5	UAL	20,194
6	Burlington Northern Santa Fe	18,198
7	Union Pacific	17,970
8	Continental Airlines	15,241
9	US Airways Group	12,118
10	CSX	11,255
11	Southwest Airlines	11,023
12	Norfolk Southern	10,661
13	YRC Worldwide	8,940
14	Ryder System	6,204
15	Con-Way	5,037

World's Busiest Airports, 2008

Airport	2008 Total Passengers (MM)
Atlanta Hartsfield-Jackson	90.0
Chicago O'Hare	69.4
London Heathrow	67.1
Tokyo Haneda	66.8
Paris Charles de Gaulle	60.9
LAX	59.5
DFW	57.1
Beijing	55.9
Frankfurt	53.5
Denver	51.2
Madrid Barajas	50.8
Hong Kong	47.9
New York JFK	47.8
Amsterdam Schiphol	47.4
Las Vegas McCarran	43.2